



ANDERSON SKATE PARK

K E N O S H A , W I S C O N S I N

SPONSORSHIP OPPORTUNITIES



City of Kenosha Parks Department
BASIK Skate Park Committee

The Mission

To establish a state-of-the art concrete skate plaza where skateboarders and inline skaters can exercise in a clean, safe environment without endangering people or damaging property. To develop a well maintained park open to skaters who are willing to uphold the parks rules and offer a positive outlet for young people that contributes to healthy attitudes and behaviors. This plan recognizes the needs of families by addressing youth desiring to skate and the families that support their young skaters.

Benefits

- Creates a state-of-the art skate park in Kenosha
- A park that contributes positively to the regions park options
- Strengthens community image and creates a sense of place
- Contributes to the health and physical well-being of the community
- Provides positive youth development in a safe, secure environment
- Recognizes and develops new community partnerships

Here is what they're saying...

"A state of the art skate park will provide a facility where members of our community, especially our youth, can exercise and interact in a safe, healthy environment..."

Art Strong
Director of Parks
City of Kennosha



SKATEBOARDING STATISTICS

There are 12.4 million skateboarders in the US, meaning that a full 4.3% of American citizens are skateboarders. (Board-Trac)

According to the Skate Park Association of the USA (SPAUSA) there have been 800 parks built in the USA over the past seven years. That's more than 2 skateparks per week. (Transworld Business, March 8,2007)

The best research which quantifies risk of skateboarding comes from the Journal of Trauma, Oct. 2002 and is written by the Consumer Product Safety Commission.

Sport Injuries per 1,000 partipants

Basketball: 21.2

Football: 20.7

Bicycling: 11.5

Snowboarding: 11.2

Skateboarding: 8.9

In-line skating: 0.9

(Skateboarding: A Surprisingly Safe Sport
By Ellen Kuwana, Neuroscience for Kids Staff Writer
November 13, 2002)

Kenosha Skate Park Information

The Location

Anderson Park, North of the Ameche Football Stadium

Due to the growing population of skateboarders, safety concerns, and the need for positive healthy activities for our youth, the City of Kenosha Parks Department and BASIK (Build a Skatepark in Kenosha), a committee of dedicated residents, plan to open the Anderson Park Skate Park in the Fall of 2007.

The Anderson Skate Park has been designed by one of the best skate park designers in the country, SITE Design Group, Inc. The 23,000 square foot all-concrete park will be host of local and national competitions and will become the area's prime hotspot for skateboarders and in-line skaters. The unique design provides elements for skateboarders and in-line skaters of all skill levels, and spectators the opportunity to view the activity in a comfortable and safe park-like setting, for free.

Anderson Park currently has ball diamonds, soccer fields, a public pool, children's playground equipment, fishing, a place for jogging and a space to add a high quality, concrete skate park, also described as the "Ledge Garden Skateboarding Plaza". This means the park has been designed with a large number of street skating elements, which are the most popular choice of the skating youth.

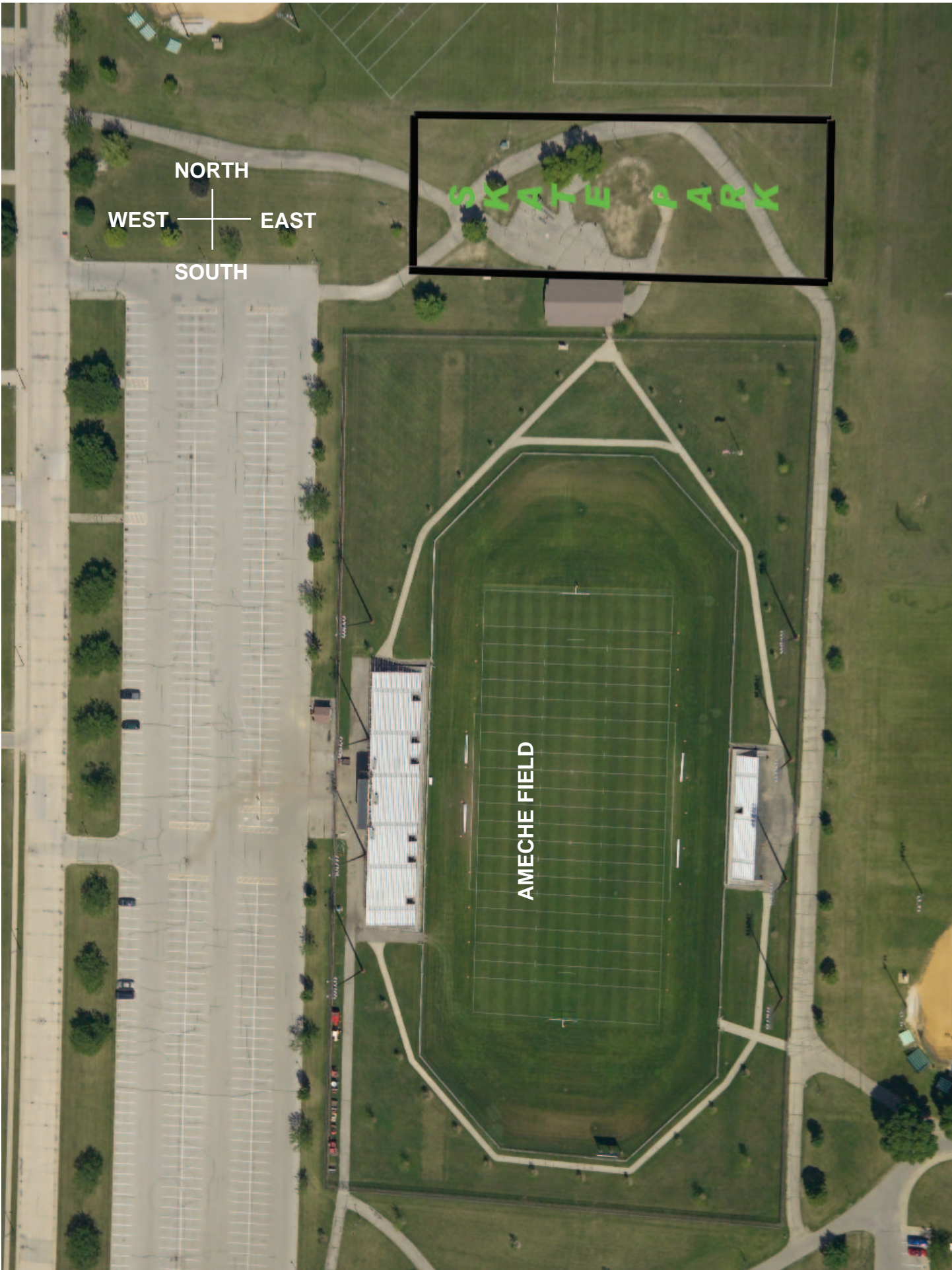
This skate park will continue the tradition to make Anderson Park multi-use and family oriented.

The Anderson Skate Park is being designed and built from money generated through corporate donations, small business support, fundraiser events, individual support and money earmarked in the City of Kenosha Capital Improvements budget. Our Goal is to raise \$400,000 by July of 2007, in order to build the Anderson Skate Park in 2007. We have \$215,000 committed to building the park at this date.

Here is what they're saying...

"My friends and I just want to skateboard somewhere where we won't get hassled. Having an area for skateboarding shows that our city cares about my interests and realizes that a skate park is a needed."

Sean Hathcock, Skateboarder
Indian Trail High School Student



NORTH

WEST

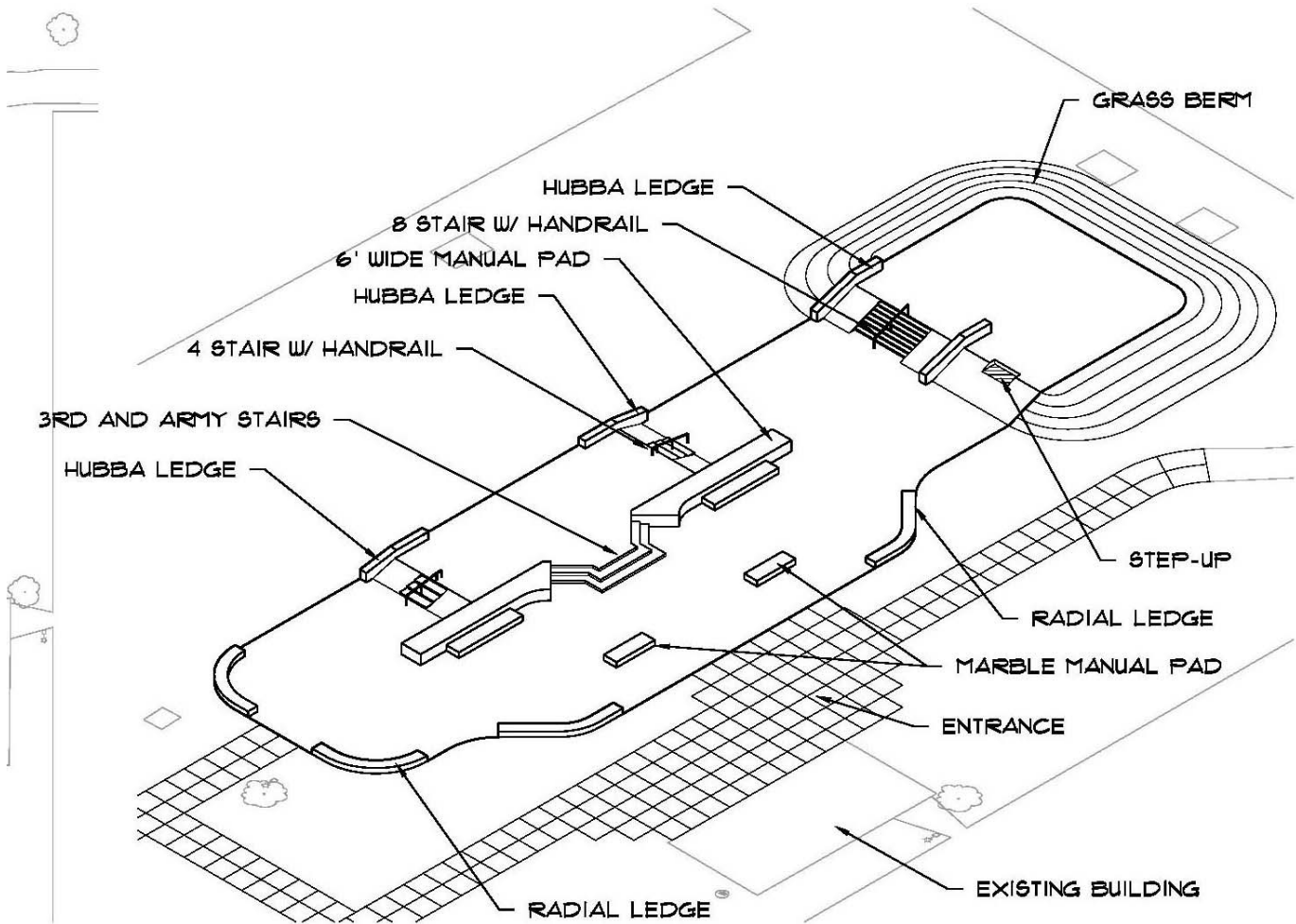
EAST

SOUTH

SKATE PARK

AMECHE FIELD

Design & Sponsorship Opportunity Locations



ISOMETRIC RENDERING

SCALE: Not to Scale

The design of the park requires a budget of approximately \$350,000 - \$400,000 (see Appendix A). The exact amount will be determined after the project goes out for bid. Design and construction drawings are completed. The cost of design and construction plans have been paid from city funds and fund raising. Our plan is to move forward to build the park with the money available the summer of 2007.

Here is what they're saying...

"As a parent of a skateboarder and a resident of the Southwest side of Kenosha, I completely endorse this project. The sport needs a home."

Peter Aiston

Name of Skatepark

\$100,000-150,000

Details

Imagine driving along 85th street or attending a football game at Ameche Field and seeing your name on the Premier Skatepark facility in Kenosha! Your name will be given exposure to 100's of skateboarders everyday, in addition to the 1,000's of people that visit Anderson Park and the Ameche stadium each year for other activities and events. You also get nationwide exposure via the skateboard industry just by being associated with one of the best skateparks in the country. The unique design, the ledge garden skate plaza allows the popular street skating obstacles as well as transitional skating for skateboarders and in-line skaters of all skill levels. Spectators have the opportunity to view the action whether watching competitions or having family time at this comfortable family friendly park.

Naming

Kenosha's Anderson Park naming rights for the Kenosha Skate Park means the skate park is actually named by you, with approval of the Kenosha Parks Department and the Kenosha City Council.

Benefits & Recognition

- Company/Individual Name/Logo on pre-construction sign at park location.
- Company/Individual Name/Logo permanently displayed on main entrance sign on the street and skate park entrance sign.
- Company/Individual Name/Logo on all skate park marketing and informational materials, including:
 - Kenosha's Guide to the City Brochures distributed to 30,000 households and available at the public library, Chamber of Commerce, neighborhood services and realtors
 - Photo and mention in the 2008 and subsequent Annual Visitor's Guide which has a distribution of 75,000 and is available on-line
 - Press Releases & TV coverage Milwaukee and Chicago for ground breaking and Opening
 - City of Kenosha and Skate Park website
 - Competition and Event flyers
 - A custom skateboard deck
 - The Official Skate Park t-shirt
 - 4' x 8' Company/Individual banner displayed at all skate park competitions/events in 2008/09
 - Plaque/Award presented at the Kenosha Skate Park Grand Opening
 - One free scholarship in your name for a child to attend a 1 week Skateboard Camp in 2009
 - Your company name/logo/ forever associated with skateboarding in Kenosha and skate boarders around the world as it would appear in online and magazine guides listing places to skate
- Other opportunities for recognition are negotiable
- Become a part of history and a recognized community partner!

Skater Bowl

\$80,000

Details

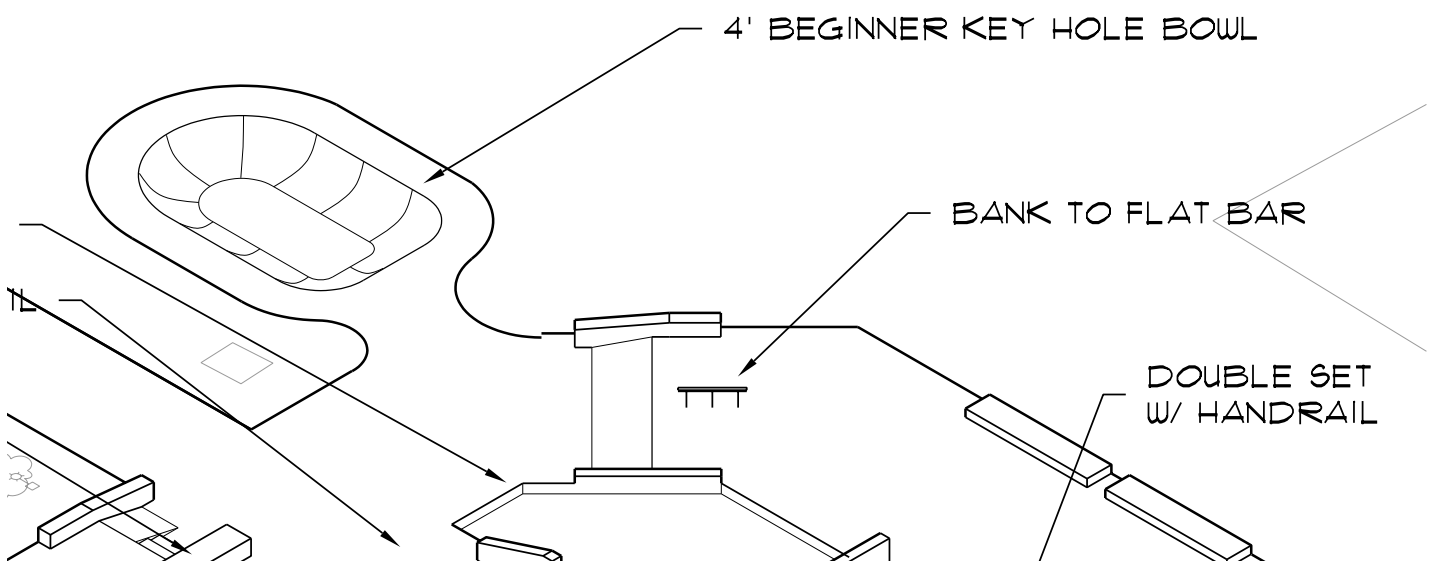
The Kenosha Ledge Garden Skate Plaza is designed with a majority of elements that feature street skating. A bowl, sitting just outside the plaza will bring an awesome element of transitional skating to the park design.

Naming

The Skater Bowl element can have your name, with approval of the Kenosha Park Department and Kenosha City Council. The _____ Bowl will be a favorite element at the park.

Benefits & Recognition

- Company/Individual Name/Logo permanently displayed on entrance to the bowl
- Company/Individual Name/Logo on all skate park marketing and informational materials, including:
 - Kenosha's Guide to the City Brochures distributed to 30,000 households and available at the public library, Chamber of Commerce, neighborhood services and realtors
 - Quarter-page ad in the 2008 Annual Visitor's Guide which has a distribution of 75,000 and is available on-line
 - Press Releases & TV coverage Milwaukee and Chicago for ground breaking and Opening
 - City of Kenosha and Skate Park website
 - Competition and Event flyers
 - A custom skateboard deck
 - The Official Skate Park t-shirt
 - 4' x 8' Company/Individual banner displayed at all skate park competitions/events in 2008/09
 - Plaque/Award presented at the Kenosha Skate Park Grand Opening
- Other opportunities for recognition are negotiable
- Become a part of history and a recognized community partner!



Anderson Skate Park Donation Form

Donor _____

Company (if applicable) _____

Address _____

Phone _____

Email _____

Website _____

The BASIK organization is a 501(c)(3) Non-profit corporation through the Rotary Foundation of Western Kenosha. We gratefully acknowledge your donation described below, to be used in connection with the construction of the Anderson Park Skate Park.

CHOOSE ONE OR MORE OF THE FOLLOWING OPTIONS

- Name the Skate Park: \$100,000 to \$150,000** (\$150,000 will build the complete park this year)
- Skater Bowl: \$80,000**

Total donation amount: \$ _____

(Donation can be broken into commitment over 2 year period.)

Donor Signature: _____

Note: *You will receive a written confirmation that your donation was received.*

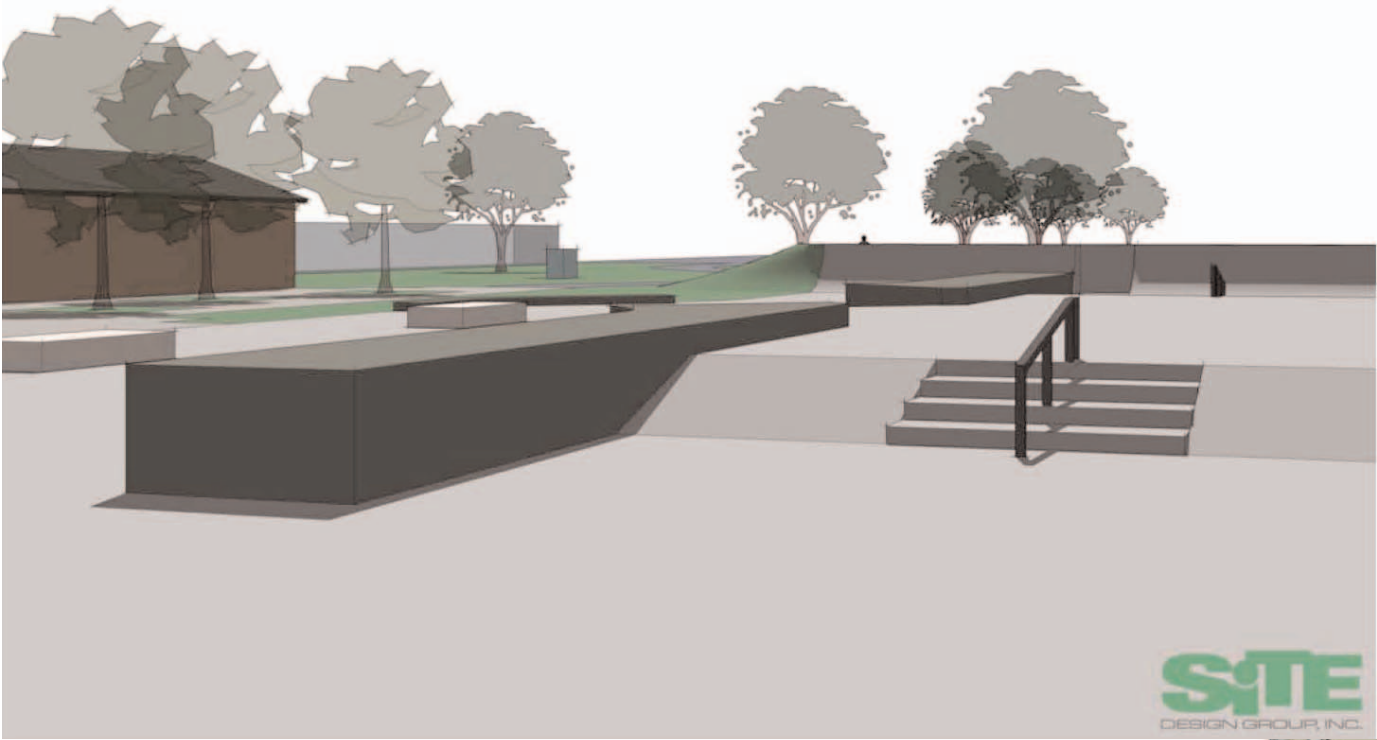
Make check payable to: Rotary Foundation of Kenosha West (501(c)(3) Organization) (write "BASIK" in the memo line of the check)

**Please send donation and entire form to: Build a Skatepark in Kenosha
Attn: C. Barber @ Johnson Bank
7500 Green Bay
Kenosha, WI 53142**

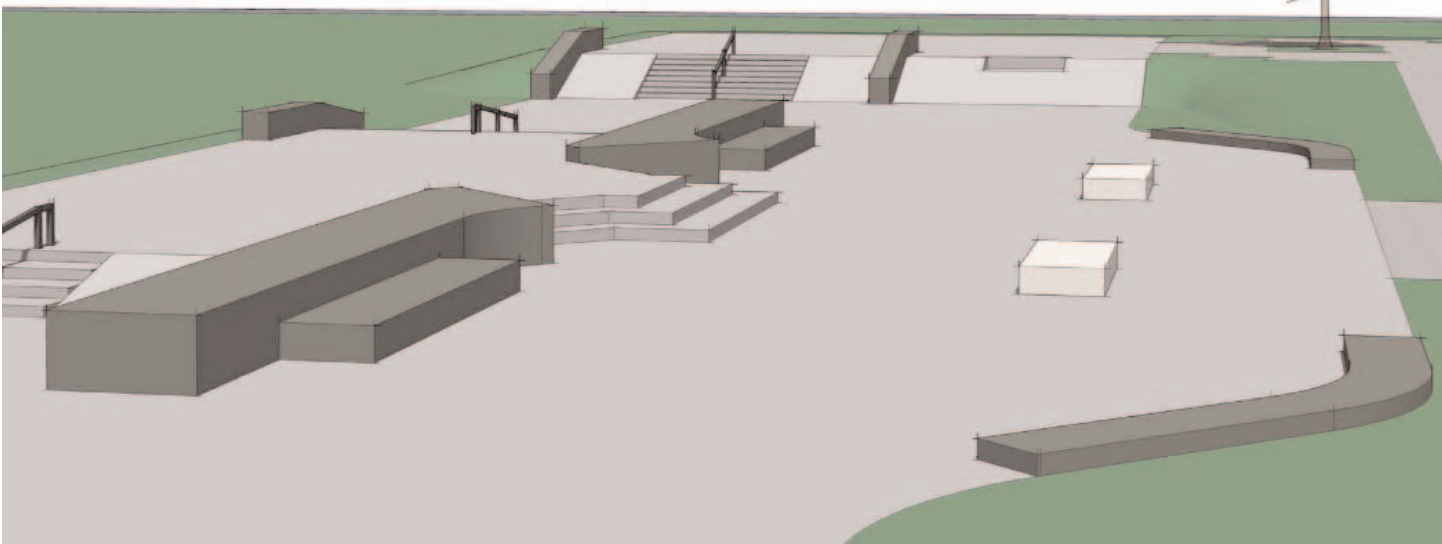
For information, contact:

**Joan Quets, BASIK (Build a Skate Park in Kenosha)
6742 50th Avenue, Kenosha, WI 53142
Phone: (262) 652-0433, email: jbquets@voyager.net**

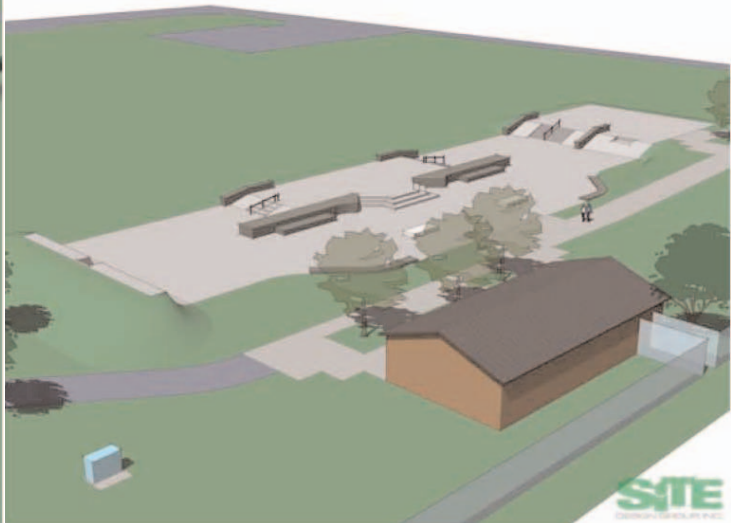
**Art Strong, City of Kenosha Park Director
Parks Department 3617 65th Street
Kenosha, WI 53142
Phone: (262)-653-4052, email: parts@kenosha.org**



SITE
DESIGN GROUP, INC.



SITE
DESIGN GROUP, INC.



SITE
DESIGN GROUP, INC.

Appendix A

Probable Construction Costs

PAY ITEM NO.	DESCRIPTION	APPROX. QUANTITY AND UNIT	UNIT PRICE	TOTAL AMOUNT
00000 – General				
1	mobilization -10% of estimate	1 ls	\$ 35,976.28	\$ 35,976.28
02220 – Demolition				
2	clearing and grubbing	17,512 sf	\$ 0.40	\$ 7,004.80
02300 – Earthwork				
3	grading cut - on-site earthwork	1,103 cy	\$ 12.00	\$ 13,239.07
4	grading fill - on-site earthwork	771 cy	\$ 12.00	\$ 9,246.34
5	export cut - off-site removal, includes hauling and traffic control	333 cy	\$ 20.00	\$ 6,654.56
02440 – Sign Graphics				
6	signage at entry - metal sign with tubular steel post, fabrication and installation	1 ea	\$ 2,500.00	\$ 2,500.00
03300 – Cast-In-Place Concrete				
7	top deck - 4" [10.16cm] rebar reinforced concrete over a.b.	14,998 sf	\$ 7.50	\$ 112,485.00
8	ledge - average 1'-6" [0.46m] high rebar reinforced concrete over a.b.	1,303 sf	\$ 80.00	\$ 104,240.00
9	stairs - rebar reinforced concrete over a.b.	425 sf	\$ 35.00	\$ 14,875.00
03300 – Shotcrete				
10	banks - 6" [15.24cm] rebar reinforced shotcrete over a.b.	1,021 sf	\$ 20.00	\$ 20,420.00
03300 – Concrete Pigment				
11	Davis Colors	7,000 lbs	\$ 1.55	\$ 10,850.00
03300 – Concrete Pigment				
12	Davis Colors	10,000 lbs	\$ 1.55	\$ 15,500.00
04400 – Stone				
13	marble top	120 lf	\$ 100.00	\$ 12,000.00
05500 – Metal Fabrications (free standing rail)				
14	3" [7.62cm] x 3" [7.62cm] square steel tube	35 lf	\$ 50.00	\$ 1,750.00
05700 – Ornamental Metals				
15	fencing - steel 6'-0" [1.83m] tall	619 lf	\$ 42.00	\$ 25,998.00
16	fencing - steel roll gate	1 ea	\$ 3,000.00	\$ 3,000.00
TOTAL ESTIMATE (This estimate does not include prevailing wage rates or any contingencies.)				\$ 395,739.04